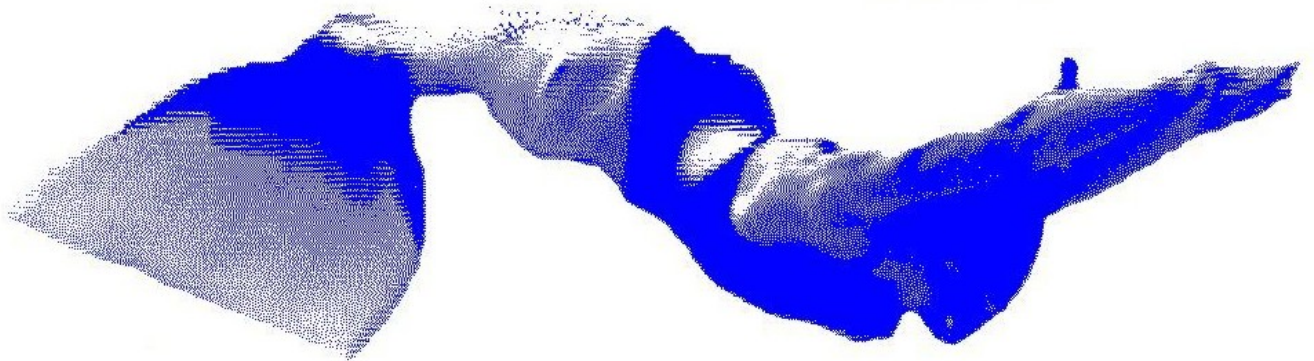


Invitation to
International Event in Finswimming
NEMO TROPHY 2010



6th - 7th November 2010

Zlín, Czech Republic 50 m City Indoor Swimmingpool



Technical instructions:

Swimmingpool:

indoor pool 50 x 20,5 m with flat bottom
min. depth 1,40 m
max. depth 1,60 m

Bottle filling:

Bottles with **valid** test would be filled from 14,30 to 20,00 at Saturday and from 8,00 to 11,00 at Sunday.
Bottles are filling by air up to 20 MPa press.

Timing equipment:

Eletrical - Omega touching panels.

Swimming rules.

CMAS rules are valid for NEMO Trophy 2010.

Organization instruction:

1. Attendance

Filled application form has to be sent till 1st November 2010
to e-mail to kubrt@nemozlin.cz

Back e-mail address of concerned club/person has to be put down on application form for back confirmation from organizers of NEMO Trophy. A confirmation about accepted swimmers and disciplines will be send back by organizer at the latest 4th November 2010.

In case of necessity please call:

phone +420 602 265 679 Mr. Knapek or +420 724 604 910 Mr. Marsalek

2. Categories and disciplines.

Nemo Trophy is open competition without dividing to age categories, the results are only in categories women and men.

Disciplines: 50 SF, 100SF, 200SF, 400SF, 800 SF and 1500 SF
50 AP, 100 UW, 400 UW and 800 UW
50 BiFi, 100 BiFi

3. Starting fee

Starting fee is 10 EUR per club + 4 EUR per each start of competitor (born 1997 and older).
Starting fee for competitors born in 1998 year and younger is 10 EUR per each start.

4. Presentation

Check in will start on Saturday 6th November 2010 in office at 50m swimming pool in Zlin, from 14:00 till 15:10 hour.

Coaches will present to control:

- *competitor identification card or passport*
- *competitor medical declaration or signed affirmation about start on own risk*
- *competitor breathing tube for checking (if he or she will swimm a surface discipline)*

Meeting of coaches will start at 15,15 hour.

5.Prizes

Clubs.

The best club win *NEMO Trophy* - a Cup given by organizer - club NEMO Zlín.

Winning order of clubs is set out by total sum of best point result of 3 best competitors from club.
(Only the one best discipline from one competitor is counted).

Individuals.

3 best swimmers according to CMAS point tablete will obtain money bonus at the time of closing ceremony in amount 150, 100 and 50 EUR in accordance of results. Best junior will obtain money bonus 50 EUR.

6. Insurance

The participants of NEMO Trophy are not insured by organizer. The participants have to have their own insurance to cover an accidental incident and they will not demand adjustment from organizers. .

7. Board and accommodation.

Organizer offer an accommodation in hostel + halfboard (dinner and breakfast) in price 16 EUR per person/night.

Board.

The participants cover board at own expense. Meal is very cheap in Czech restaurants, good lunch or dinner cost about 5 - 6 EUR.

Cafeteria at swimming pool will be open at the time of competition.

Accommodation

Organiser offer accommodation on Saturday night at hostel with Saturday dinner and Sunday breakfast in price 16 EUR/person. Accommodation at hostel without meal on Friday night (5th Nov.) cost 9 EUR/person.

Organizer offer booking rooms at hotels in price 22 - 30 EUR/per night and double room.

Please, your demand for accommodation should be send to us **till 30th October 2010.**

We are not able to guarantee demanded category of accommodation after this date.

8. Transport.

Zlin is located 100 km in east direction from Brno (CZ) or 200 km to north-north-east direction from Wien (Austria).

Hotels and hostels are very close to swimming pool, 5 minutes by walk maximum.

Timetable.

Saturday afternoon:

Check in from 14,00 till 15,15 hour

Coaches meeting starts from 15,15

Warm up from 15,15 till 16,05 hour

Opening ceremony at 16,10 hour

Start competition at 16,15 hour

Disciplines order: 400 SF W, M

50 SF W, M

800 UW W, M

100 BiFi W,M

1500 SF W, M

100 UW W, M

200 SF W, M

Expected closing of the day – at 20,45 hour

Sunday morning

Warm up 8,00 - 8,55

Competition start at 9,00

Discipline orders 50 AP M, W

50 BiFi M,W

800 SF M, W

400 UW M, W

100 SF M, W

Price and closing ceremony 12,30 – 12,45 hour

Expected end of competition at 12,50 hour.